

GOOGLE EARTH AERIAL IMAGE (DATE UNKNOWN)



(Not to Scale)

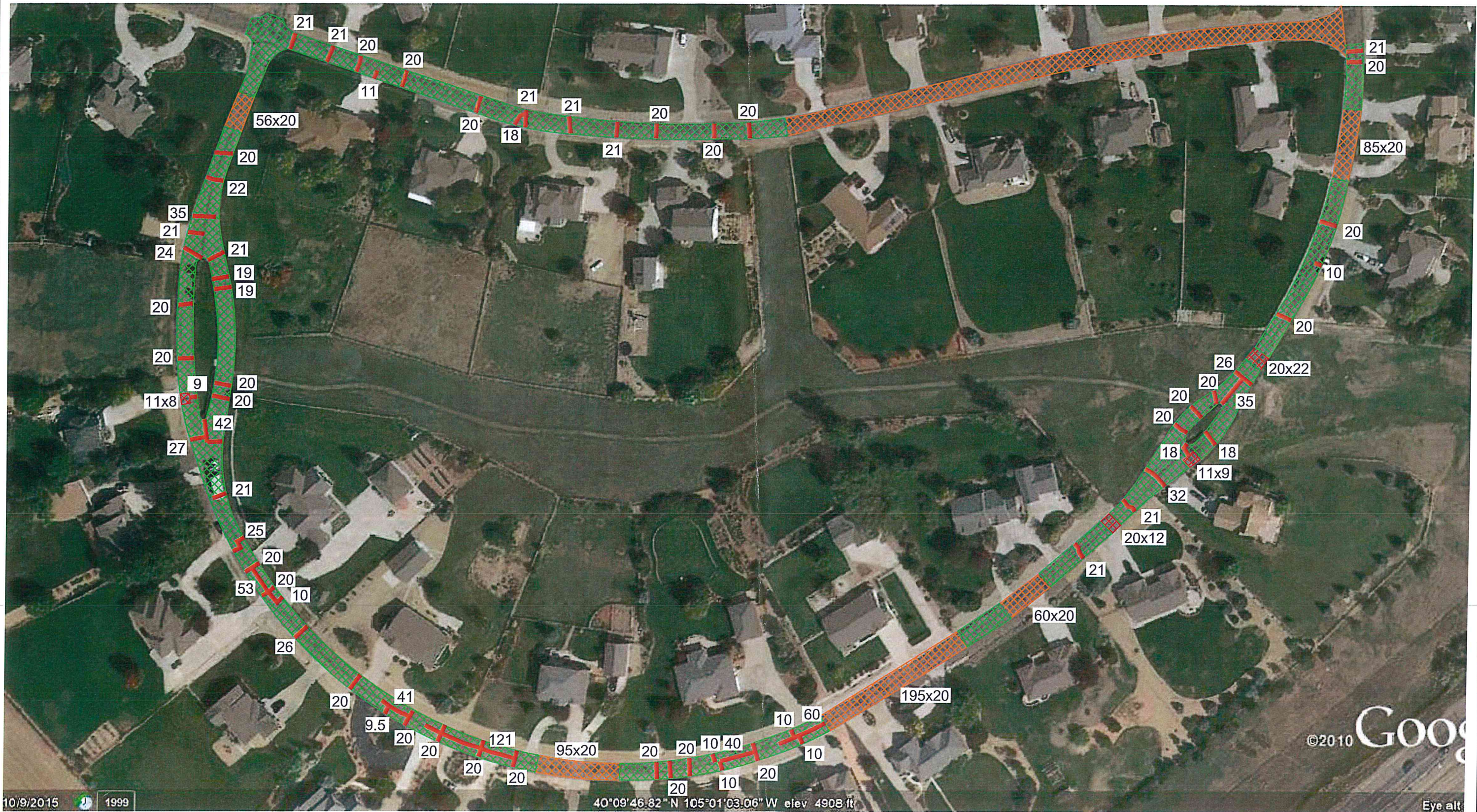
GROUND
ENGINEERING CONSULTANTS

SITE VICINITY MAP

JOB NO.: 17-3738

FIGURE: -

CADFILE NAME: 17-3738SITE.DWG







10/9/2015 1999

40°09'46.82" N 105°01'03.06" W elev 4908 ft

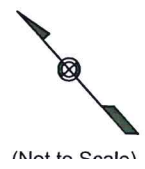
©2010 Google
Eye alt.

GOOGLE EARTH AERIAL IMAGE (DATE UNKNOWN)

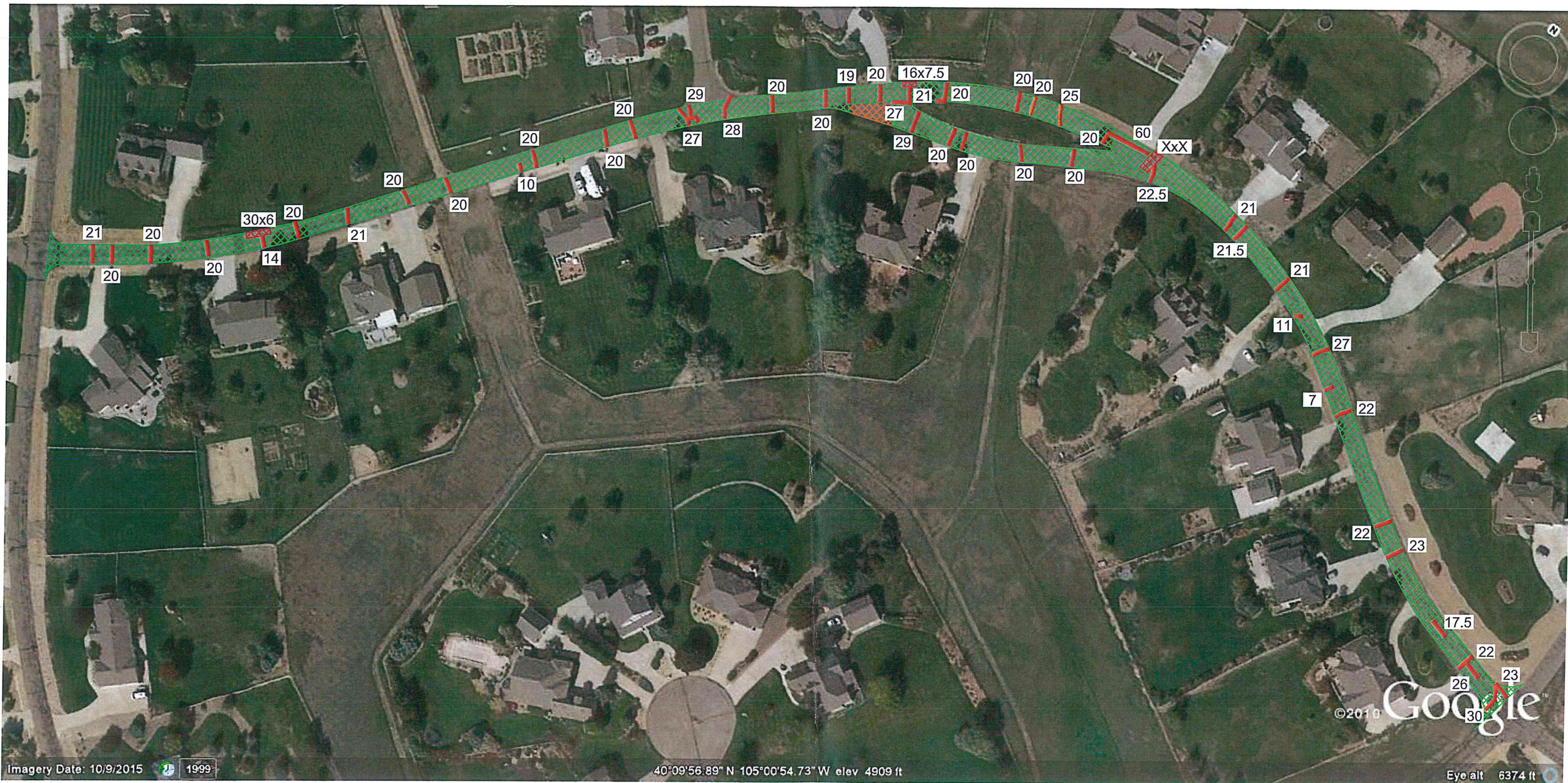
-  Mill 5" full Depth and replace with 3" G PG(58-28 or 64-22) and 2" SX PG(58-28 or 64-22).
-  Mill 1.25" (2" at edge transitioning to 0.5" at center) and overlay with 2" SX PG(58-22 or 64-22).

-  Small patch areas - remove and replace with SX-PG(58-28 or 64-22).
-  21 Crack Patch (Linear Feet) - 5" depth remove and replace with 3" - 4" of SX PG(58-28 or 64-22).



Edge Mill Meadow Vale Road & Blue Mountain Road 7/9/18 Crack Patch/fulldepth 7/10- 7/12





GROUND ENGINEERING CONSULTANTS	
MEADOW VALE ROAD - SOUTH LOOP/ BLUE MTN. CENTER SCOPE OF WORK	
JOB NO.: 17-3738	FIGURE: 1



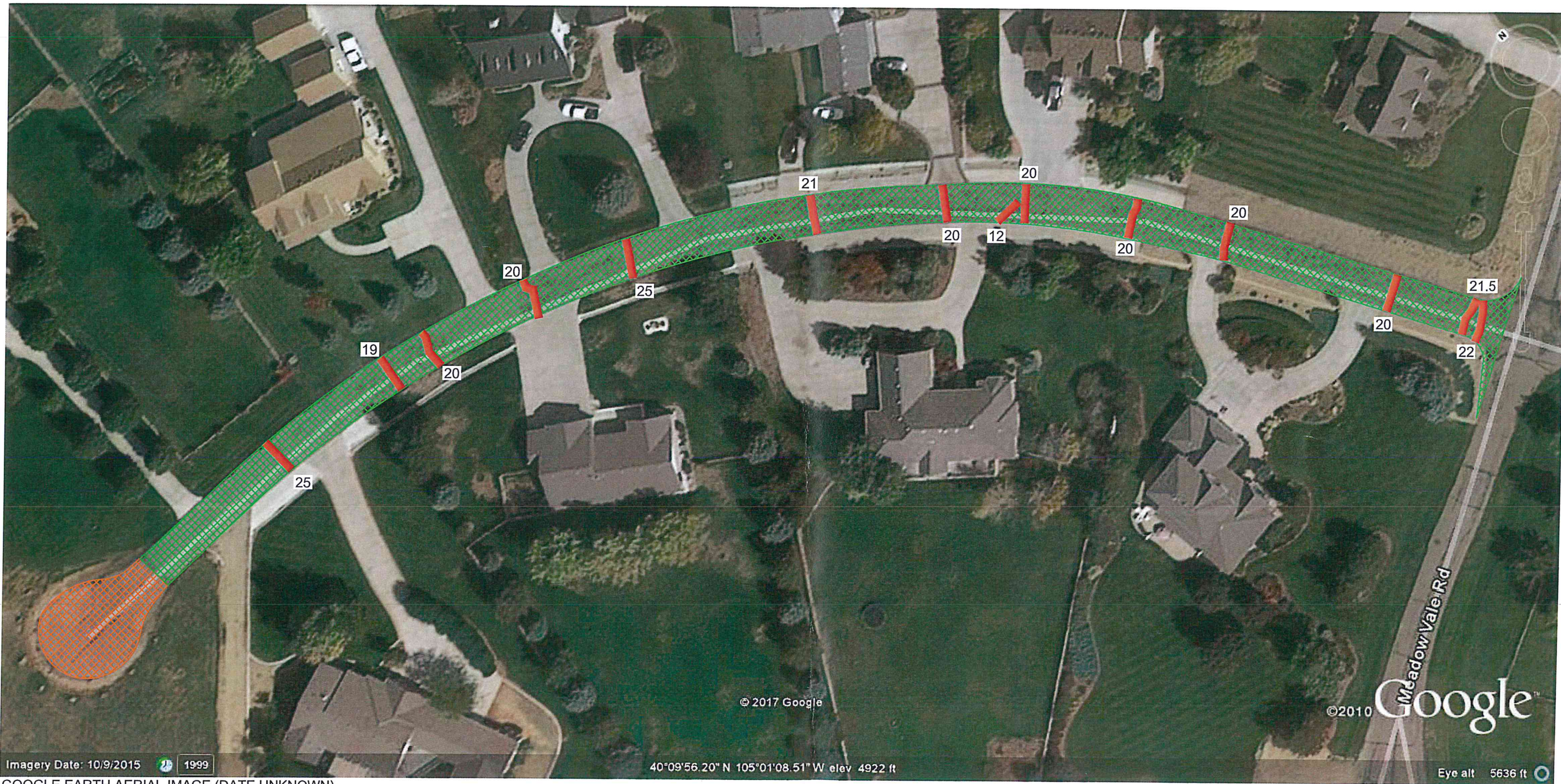
GOOGLE EARTH AERIAL IMAGE (DATE UNKNOWN)

 Mill 5" full Depth and replace with 3" G PG(58-28 or 64-22) and 2" SX PG(58-28 or 64-22).
 Mill 1.25" (2" at edge transitioning to 0.5" at center) and overlay with 2" SX PG(58-22 or 64-22).

 Small patch areas - remove and replace with SX-PG(58-28 or 64-22).
 21 Crack Patch (Linear Feet) - 5" depth remove and replace with 3" - 4" of SX PG(58-28 or 64-22).



**EDGE MILL 7/10/18
 PATCHING 7/16/18
 OVERLAY AFTER PATCHING**



GROUND
 ENGINEERING CONSULTANTS
 MEADOW VALE ROAD - NORTH LOOP
 SCOPE OF WORK
 OB NO.: 17-3738 FIGURE: 2
 :ADFILE NAME: 17-3738SITE.DWG



Imagery Date: 10/9/2015 1999
 GOOGLE EARTH AERIAL IMAGE (DATE UNKNOWN)

© 2017 Google
 © 2010 Google
 40°09'56.20" N 105°01'08.51" W elev 4922 ft
 Eye alt 5636 ft

-  Mill 5" full Depth and replace with 3" G PG(58-28 or 64-22) and 2" SX PG(58-28 or 64-22).
-  Mill 1.25" (2" at edge transitioning to 0.5" at center) and overlay with 2" SX PG(58-22 or 64-22).

-  Small patch areas - remove and replace with SX-PG(58-28 or 64-22).
-  21 Crack Patch (Linear Feet) - 5" depth remove and replace with 3" - 4" of SX PG(58-28 or 64-22).





**MILL OUT ROAD 7/10/18
 PATCHING 7/1/18
 OVERLAY AFTER ALL PATCHING**

GROUND
 ENGINEERING CONSULTANTS
 BLUE MTN. ROAD - WEST END
 SCOPE OF WORK

IOB NO.: 17-3738	FIGURE: 3
DADFILE NAME: 17-3738SITE.DWG	

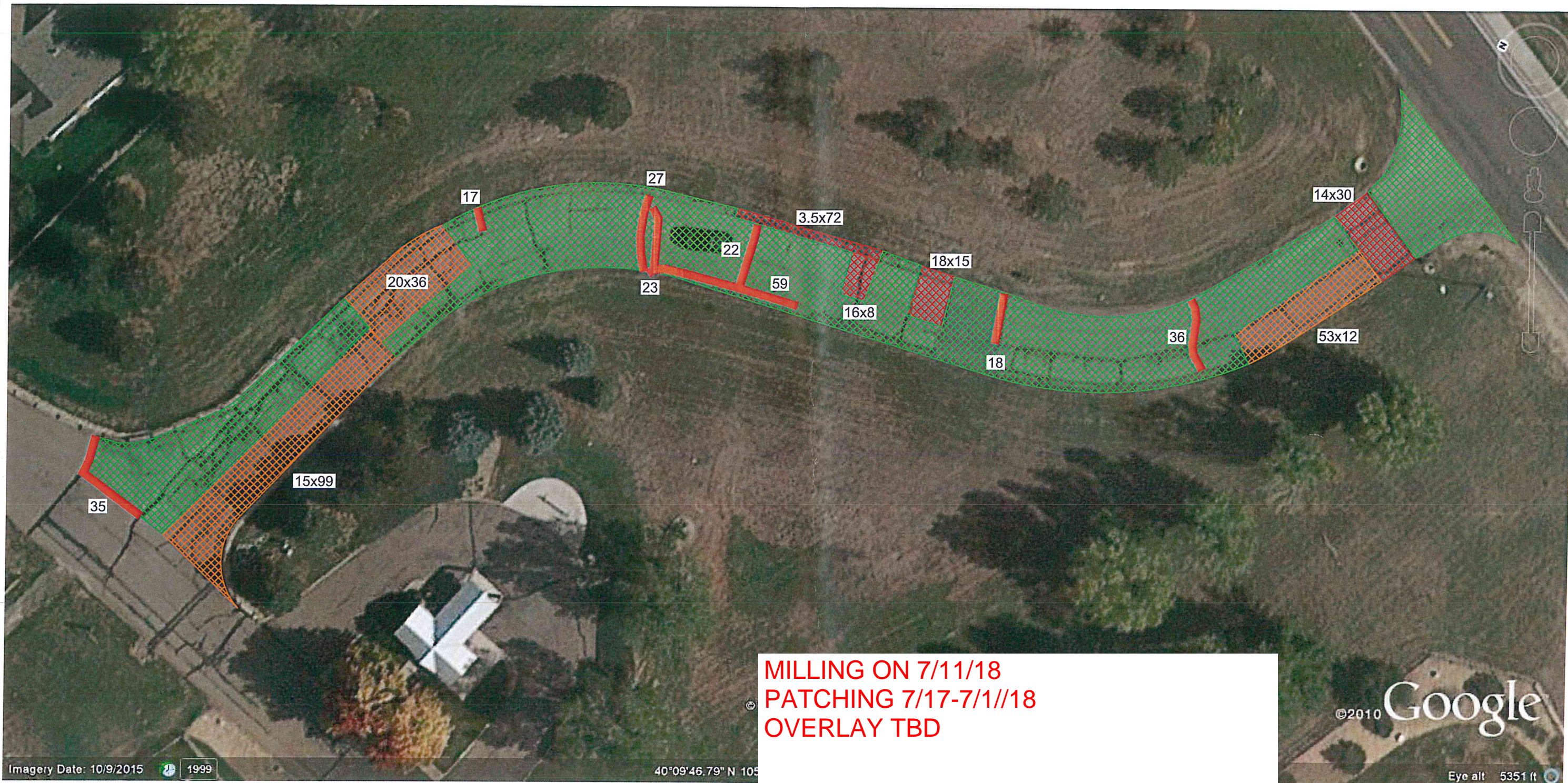


GOOGLE EARTH AERIAL IMAGE (DATE UNKNOWN)





-  Mill 5" full Depth and replace with 3" G PG(58-28 or 64-22) and 2" SX PG(58-28 or 64-22).
-  Small patch areas - remove and replace with SX-PG(58-28 or 64-22).
-  Mill 1.25" (2" at edge transitioning to 0.5" at center) and overlay with 2" SX PG(58-22 or 64-22).
-  21 Crack Patch (Linear Feet) - 5" depth remove and replace with 3" - 4" of SX PG(58-28 or 64-22).

MILL OUT ROAD ON 7/10/18
 PATCHING 7/11/18
 OVERLAY TBD

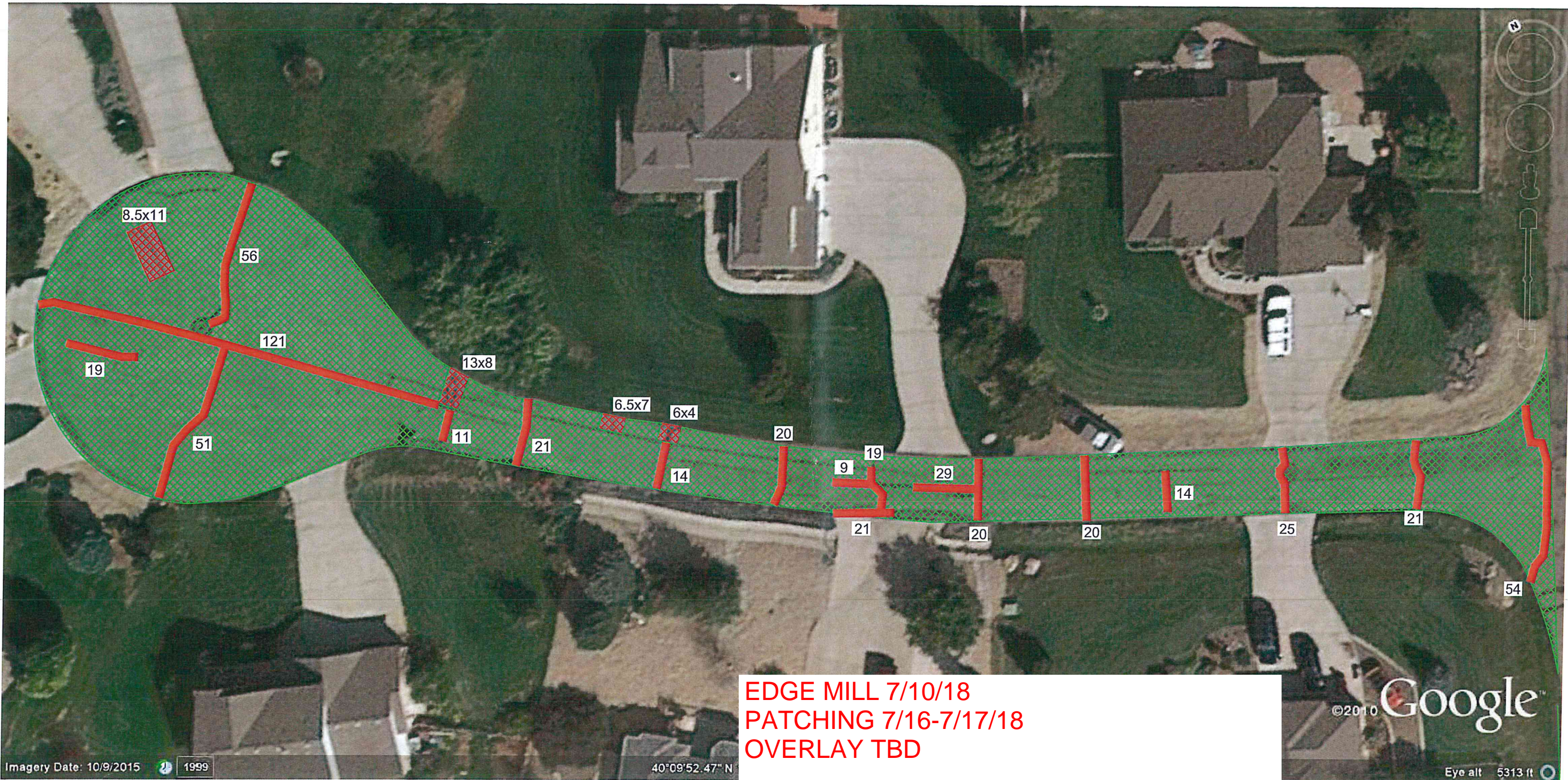
GROUND ENGINEERING CONSULTANTS	
BLUE MTN. ROAD - WEST END SCOPE OF WORK	
JOB NO.: 17-3738	FIGURE: 3
CADFILE NAME: 17-3738SITE.DWG	




GOOGLE EARTH AERIAL IMAGE (DATE UNKNOWN)


-  Mill 5" full Depth and replace with 3" G PG(58-28 or 64-22) and 2" SX PG(58-28 or 64-22).
-  Small patch areas - remove and replace with SX-PG(58-28 or 64-22).
-  Mill 1.25" (2" at edge transitioning to 0.5" at center) and overlay with 2" SX PG(58-22 or 64-22).
-  21 Crack Patch (Linear Feet) - 5" depth remove and replace with 3" - 4" of SX PG(58-28 or 64-22).

GROUND ENGINEERING CONSULTANTS	
SOUTH ENTRANCE ROAD SCOPE OF WORK	
JOB NO.: 17-3738	FIGURE: 4
CADFILE NAME: 17-3738SITE.DWG	



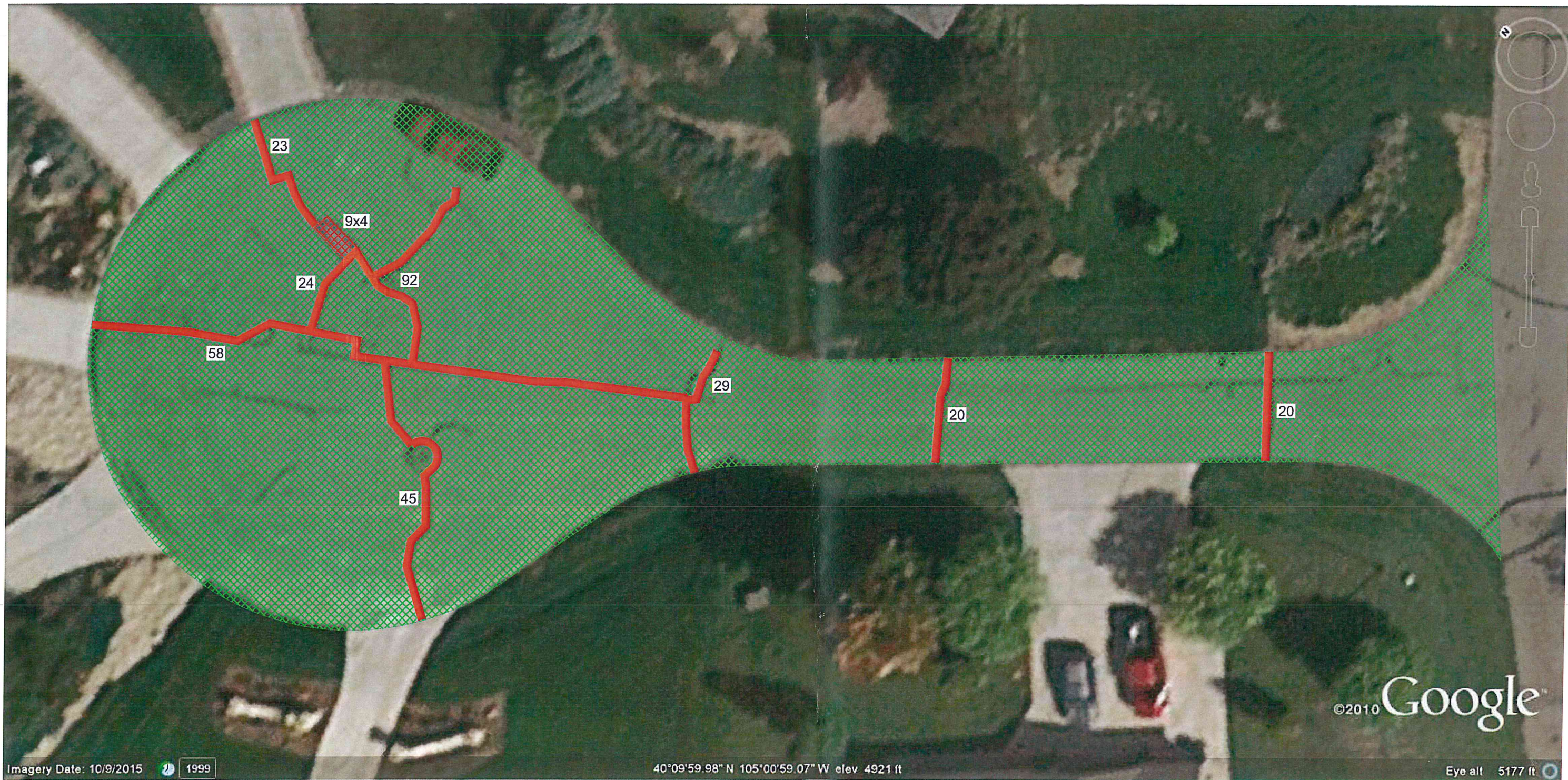
GOOGLE EARTH AERIAL IMAGE (DATE UNKNOWN)

 Mill 1.25" (2" at edge transitioning to 0.5" at center) and overlay with 2" SX PG(58-22 or 64-22).


 Small patch areas - remove and replace with SX-PG(58-28 or 64-22).


 21 Crack Patch (Linear Feet) - 5" depth remove and replace with 3" - 4" of SX PG(58-28 or 64-22).

GROUND ENGINEERING CONSULTANTS	
MEADOWLARK PLACE SCOPE OF WORK	
JOB NO.: 17-3738	FIGURE: 5
CADFILE NAME: 17-3738SITE.DWG	



GOOGLE EARTH AERIAL IMAGE (DATE UNKNOWN)

 Mill 1.25" (2" at edge transitioning to 0.5" at center) and overlay with 2" SX PG(58-22 or 64-22).

 Small patch areas - remove and replace with SX-PG(58-28 or 64-22).

21  Crack Patch (Linear Feet) - 5" depth remove and replace with 3" - 4" of SX PG(58-28 or 64-22).


**EDGE MILL 7/10/18
PATCHING 7/12-7/13/18
OVERLAY TBD**

GROUND ENGINEERING CONSULTANTS	
JCK PLACE SCOPE OF WORK	
JOB NO.: 17-3738	FIGURE: 6
CADFILE NAME: 17-3738SITE.DWG	



**FULL DEPTH MILL 7/16/18
PAVE BACK 7/16/18**

Imagery Date: 10/9/2015 1999
GOOGLE EARTH AERIAL IMAGE (DATE UNKNOWN)

 Mill 5" full Depth and replace with 3" G PG(58-28 or 64-22) and 2" SX PG(58-28 or 64-22).





GROUND ENGINEERING CONSULTANTS	
HOMESTEAD PLACE SCOPE OF WORK	
JOB NO.: 17-3738	FIGURE: 7
CADFILE NAME: 17-3738SITE.DWG	



**MILLING ON 7/11/18
 PATCHING 7/18-7/19/18
 OVERLAY TBD**

Imagery Date: 10/9/2015 1999 40°09'52.96" N 105°00'42"

GOOGLE EARTH AERIAL IMAGE (DATE UNKNOWN)

-  Mill 5" full Depth and replace with 3" G PG(58-28 or 64-22) and 2" SX PG(58-28 or 64-22).
-  Mill 1.25" (2" at edge transitioning to 0.5" at center) and overlay with 2" SX PG(58-22 or 64-22).
-  Small patch areas - remove and replace with SX-PG(58-28 or 64-22).
-  21 Crack Patch (Linear Feet) - 5" depth remove and replace with 3" - 4" of SX PG(58-28 or 64-22).

GROUND ENGINEERING CONSULTANTS	
MEADOW VALE RD (NE) / NORTH ENTRANCE RD SCOPE OF WORK	
JOB NO.: 17-3738	FIGURE: 8
CADFILE NAME: 17-3738SITE.DWG	