

GOOGLE EARTH AERIAL IMAGE (DATE UNKNOWN)



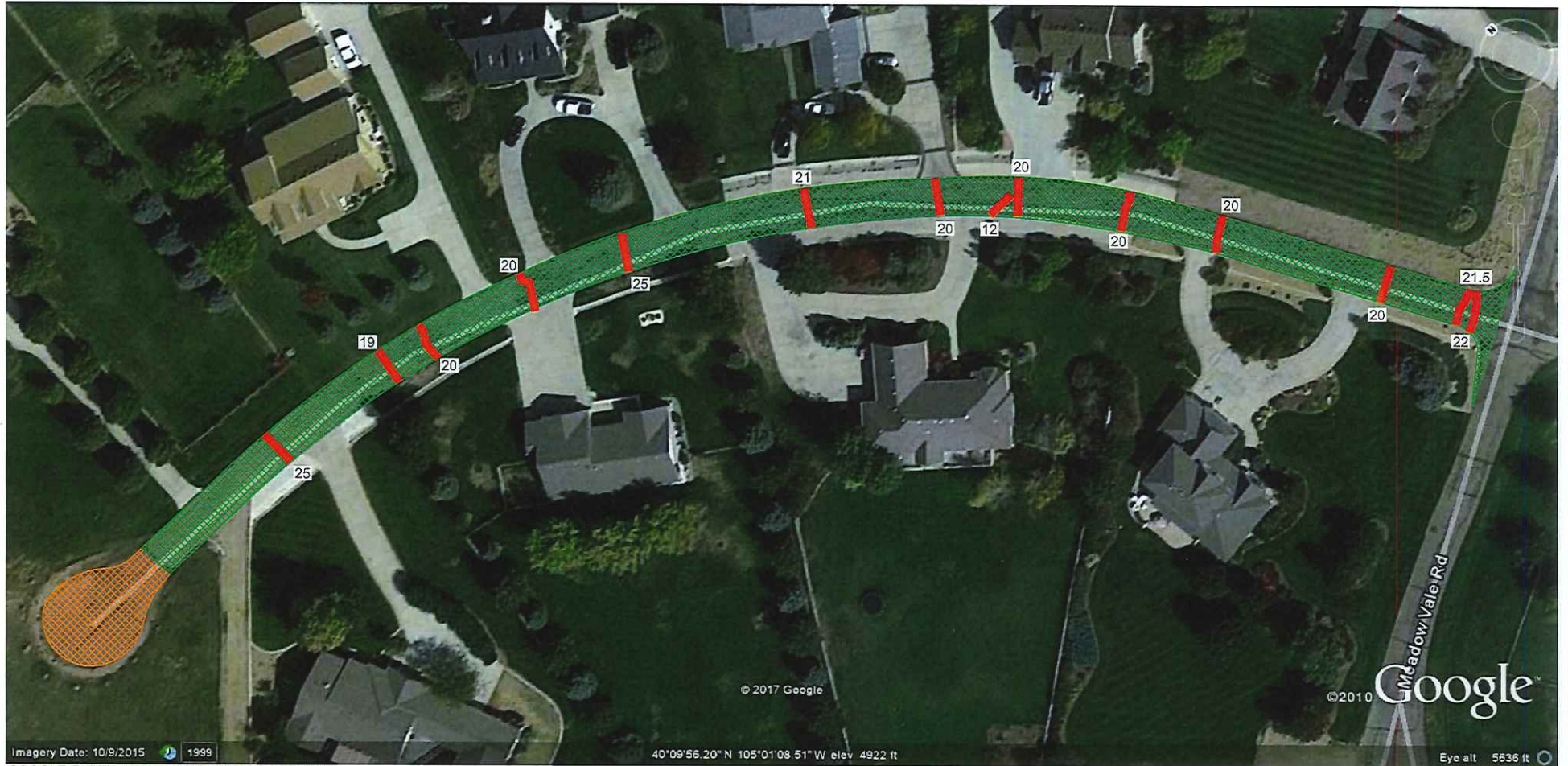
(Not to Scale)

<b>GROUND</b> ENGINEERING CONSULTANTS	
SITE VICINITY MAP	
JOB NO.: 17-3738	FIGURE: -
CADFILE NAME: 17-3738SITE.DWG	





Patching - Complete  
 Overlay - 7-25-2018



GOOGLE EARTH AERIAL IMAGE (DATE UNKNOWN)

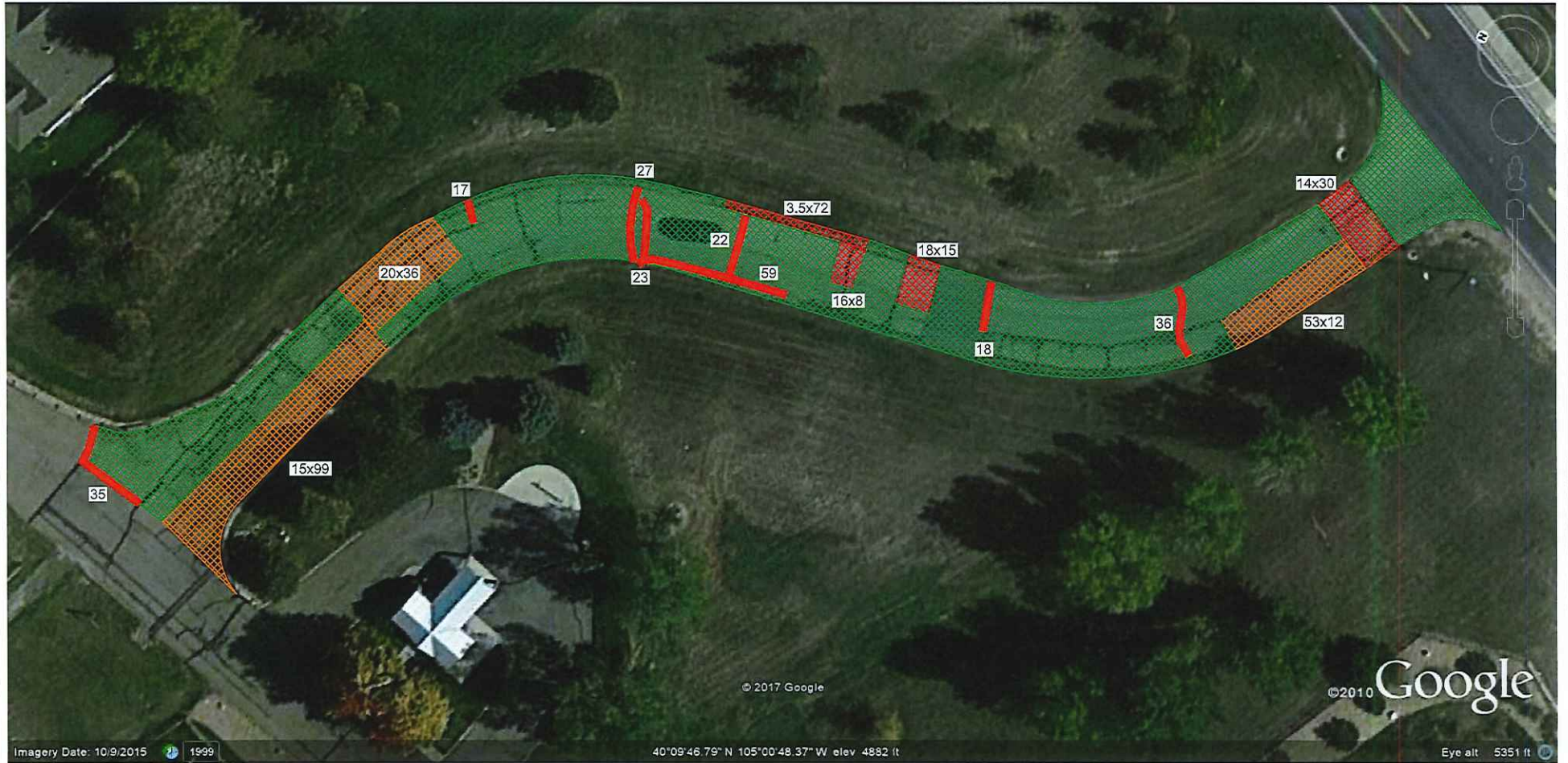
- Mill 5" full Depth and replace with 3" G PG(58-28 or 64-22) and 2" SX PG(58-28 or 64-22).
- Mill 1.25" (2" at edge transitioning to 0.5" at center) and overlay with 2" SX PG(58-22 or 64-22).
- Small patch areas - remove and replace with SX-PG(58-28 or 64-22).
- Crack Patch (Linear Feet) - 5" depth remove and replace with 3" - 4" of SX PG(58-28 or 64-22).




(Not to Scale)


<b>GROUND</b>	
ENGINEERING CONSULTANTS	
BLUE MTN. ROAD - WEST END	
SCOPE OF WORK	
JOB NO.: 17-3738	FIGURE: 3
CADFILE NAME: 17-3738SITE.DWG	


Patching - 7-23-2018  
 Overlay - 7-26-2018




GOOGLE EARTH AERIAL IMAGE (DATE UNKNOWN)

 Mill 5" full Depth and replace with 3" G PG(58-28 or 64-22) and 2" SX PG(58-28 or 64-22).

 Small patch areas - remove and replace with SX-PG(58-28 or 64-22).

 Mill 1.25" (2" at edge transitioning to 0.5" at center) and overlay with 2" SX PG(58-22 or 64-22).

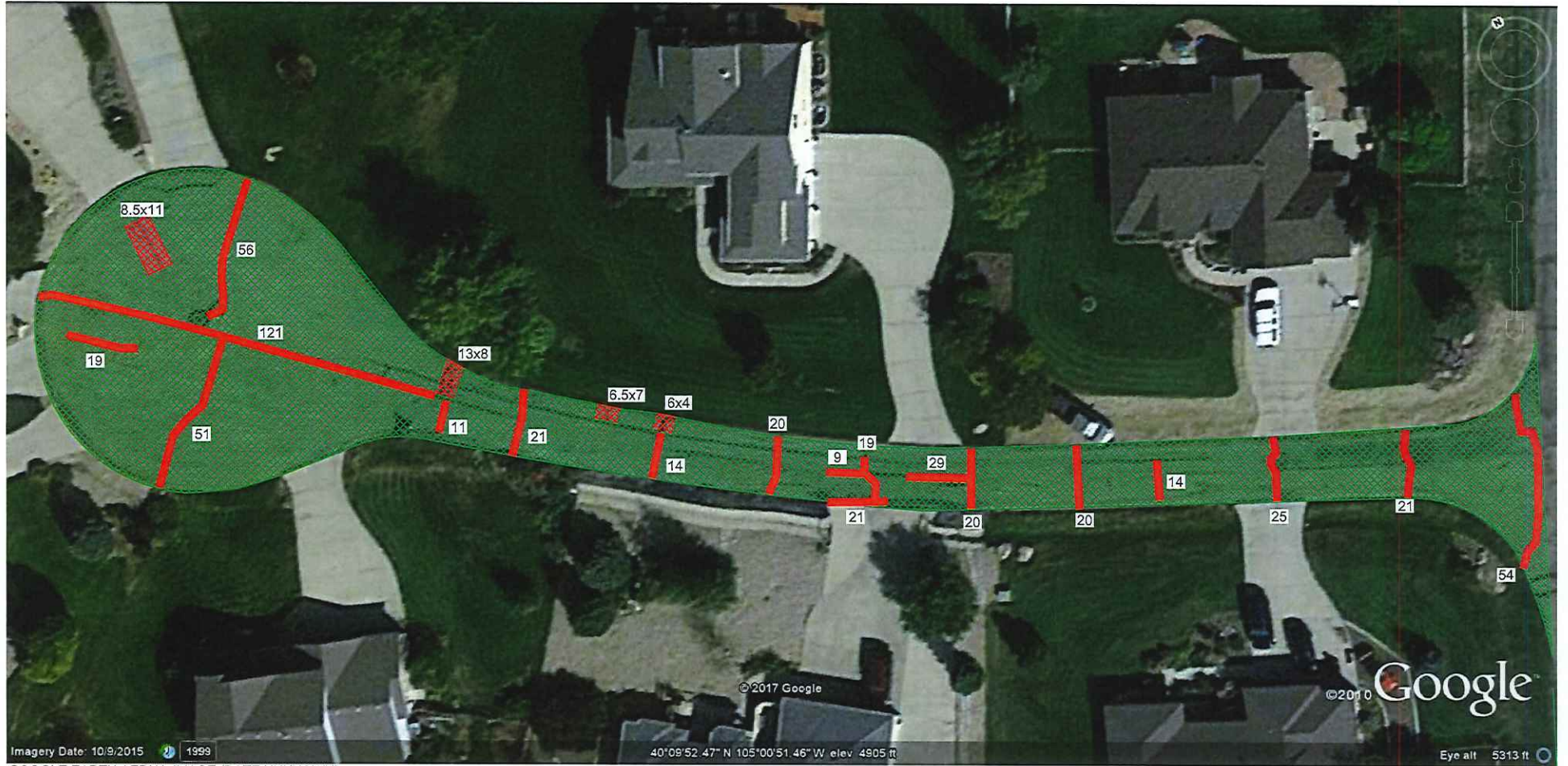
 Crack Patch (Linear Feet) - 5" depth remove and replace with 3" - 4" of SX PG(58-28 or 64-22).




(Not to Scale)


<b>GROUND</b> ENGINEERING CONSULTANTS	
SOUTH ENTRANCE ROAD SCOPE OF WORK	
JOB NO.: 17-3738	FIGURE: 4
CADFILE NAME: 17-3738SITE.DWG	


Patching - 7-17-2018  
 Overlay - 7-23-2018



Imagery Date: 10/9/2015 1999  
 GOOGLE EARTH AERIAL IMAGE (DATE UNKNOWN)

 Mill 1.25" (2" at edge transitioning to 0.5" at center) and overlay with 2" SX PG(58-22 or 64-22).

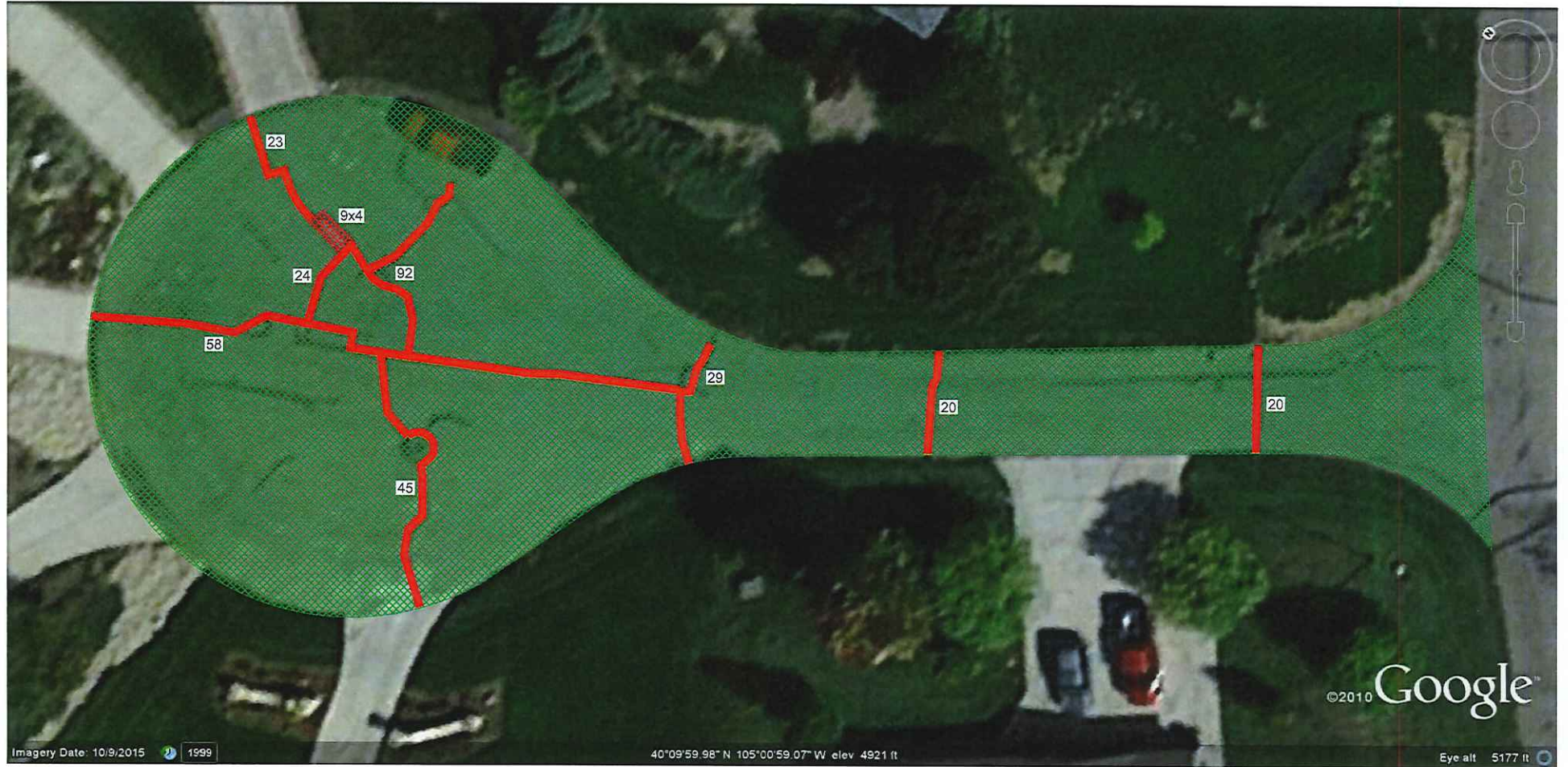
 Small patch areas - remove and replace with SX-PG(58-28 or 64-22).

 Crack Patch (Linear Feet) - 5" depth remove and replace with 3" - 4" of SX PG(58-28 or 64-22).



<b>GROUND</b> ENGINEERING CONSULTANTS	
MEADOWLARK PLACE SCOPE OF WORK	
JOB NO.: 17-3738	FIGURE: 5
CADFILE NAME: 17-3738SITE.DWG	

Patching - 7-17-2018  
Overlay - 7-23-2018





Imagery Date: 10/9/2015 1999


40°09'59.98" N 105°00'59.07" W elev 4921 ft

Eye alt 5177 ft

GOOGLE EARTH AERIAL IMAGE (DATE UNKNOWN)

 Mill 1.25" (2" at edge transitioning to 0.5" at center) and overlay with 2" SX PG(58-22 or 64-22).

 Small patch areas - remove and replace with SX-PG(58-28 or 64-22).

 21 Crack Patch (Linear Feet) - 5" depth remove and replace with 3" - 4" of SX PG(58-28 or 64-22).



(Not to Scale)

<b>GROUND</b> ENGINEERING CONSULTANTS	
JCK PLACE SCOPE OF WORK	
JOB NO.: 17-3738	FIGURE: 6
CADFILE NAME: 17-3738SITE.DWG	

Removal and Replacement -  
7-16-2018



Imagery Date: 10/9/2015 1999  
GOOGLE EARTH AERIAL IMAGE (DATE UNKNOWN)

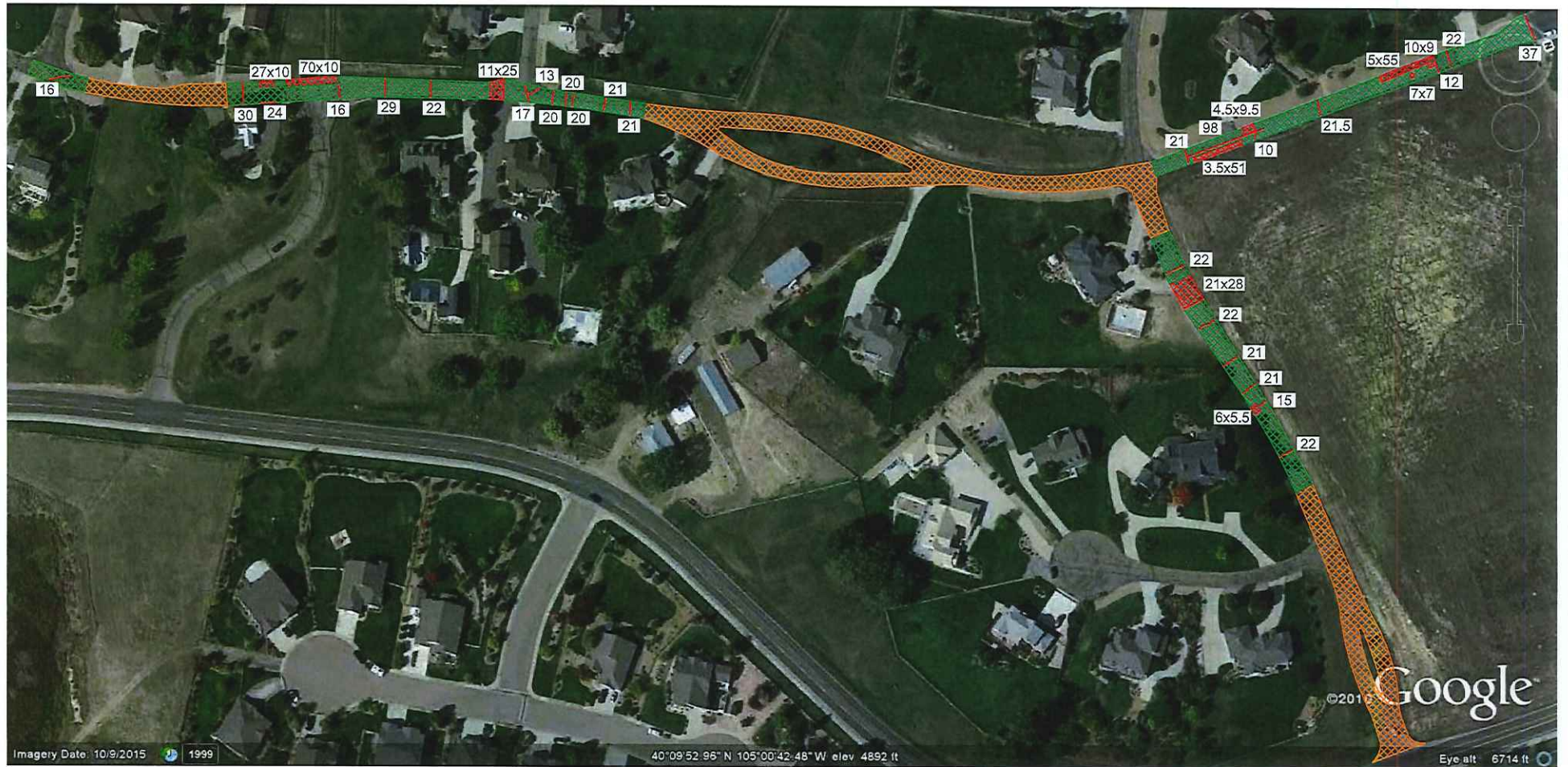
Mill 5" full Depth and replace with 3" G PG(58-28 or 64-22)  
and 2" SX PG(58-28 or 64-22).




(Not to Scale)


<b>GROUND</b> ENGINEERING CONSULTANTS	
HOMESTEAD PLACE SCOPE OF WORK	
JOB NO.: 17-3738	FIGURE: 7
CADFILE NAME: 17-3738SITE.DWG	


Crack Patching - 7-19-2018  
 Paver Patching - 7-24-2018 / 7-25-2018  
 Overlay - 7-27-2018




GOOGLE EARTH AERIAL IMAGE (DATE UNKNOWN)

 Mill 5" full Depth and replace with 3" G PG(58-28 or 64-22) and 2" SX PG(58-28 or 64-22).

 Small patch areas - remove and replace with SX-PG(58-28 or 64-22).

 Mill 1.25" (2" at edge transitioning to 0.5" at center) and overlay with 2" SX PG(58-22 or 64-22).

 Crack Patch (Linear Feet) - 5" depth remove and replace with 3" - 4" of SX PG(58-28 or 64-22).



<b>GROUND</b> ENGINEERING CONSULTANTS	
MEADOW VALE RD (NE) / NORTH ENTRANCE RD SCOPE OF WORK	
JOB NO.: 17-3738	FIGURE: 8
CADFILE NAME: 17-3738SITE.DWG	

Meadow Vale HOA



Imagery Date 10/9/2015 1999  
GOOGLE EARTH AERIAL IMAGE (DATE UNKNOWN)

Asphalt Speed Bump

5.0"  
Indicates asphalt core depth and approximate location.



**GROUND**  
ENGINEERING CONSULTANTS

PAVEMENT THICKNESS

JOB NO.: 17-3738

FIGURE: 9

CADFILE NAME: 17-3738SITE.DWG