

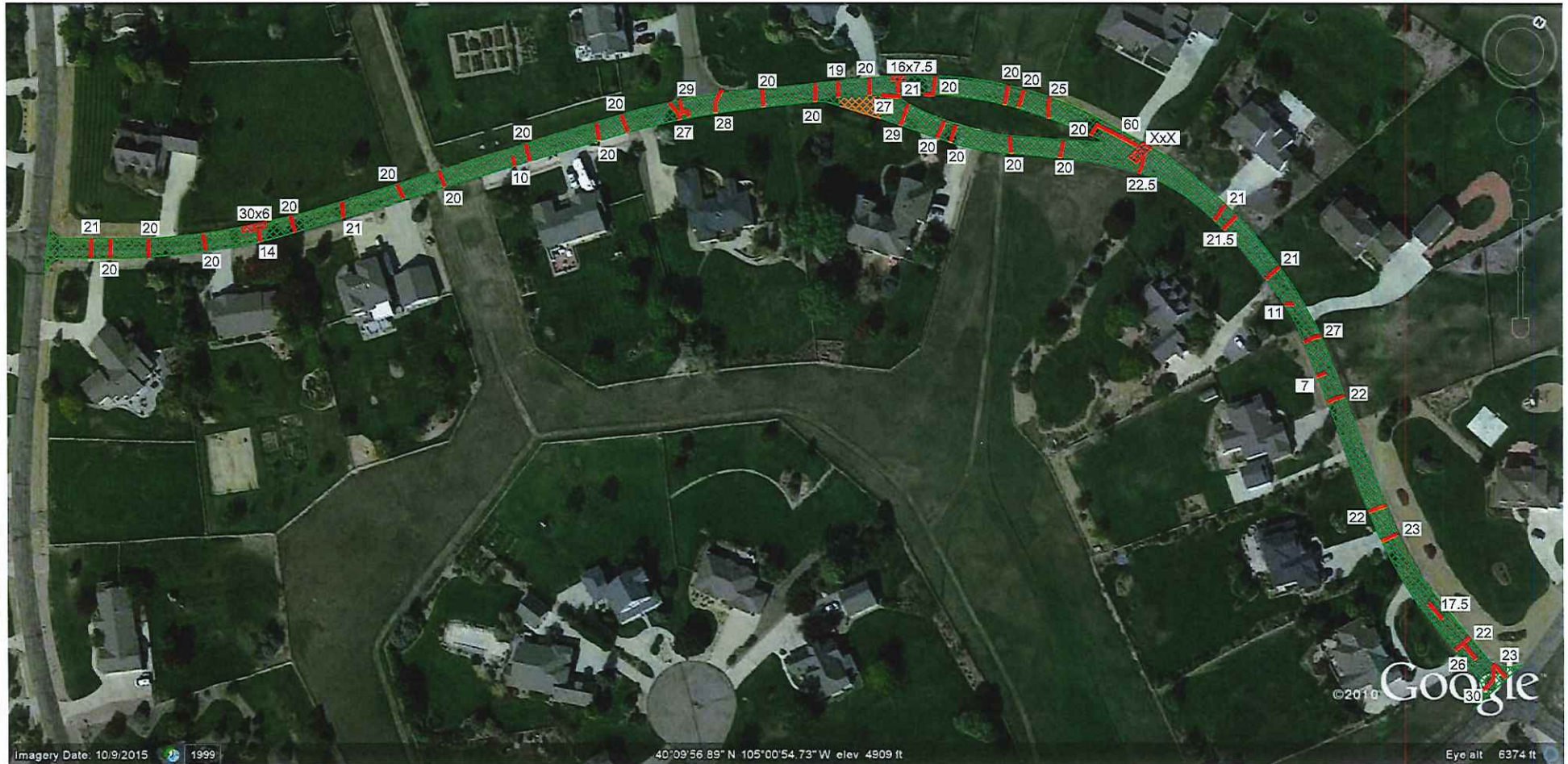
GOOGLE EARTH AERIAL IMAGE (DATE UNKNOWN)







(Not to Scale)

GROUND ENGINEERING CONSULTANTS	
SITE VICINITY MAP	
JOB NO.: 17-3738	FIGURE: -
CADFILE NAME: 17-3738SITE.DWG	

Patching - 7-27-2018
 Overlay - 7-30-2018



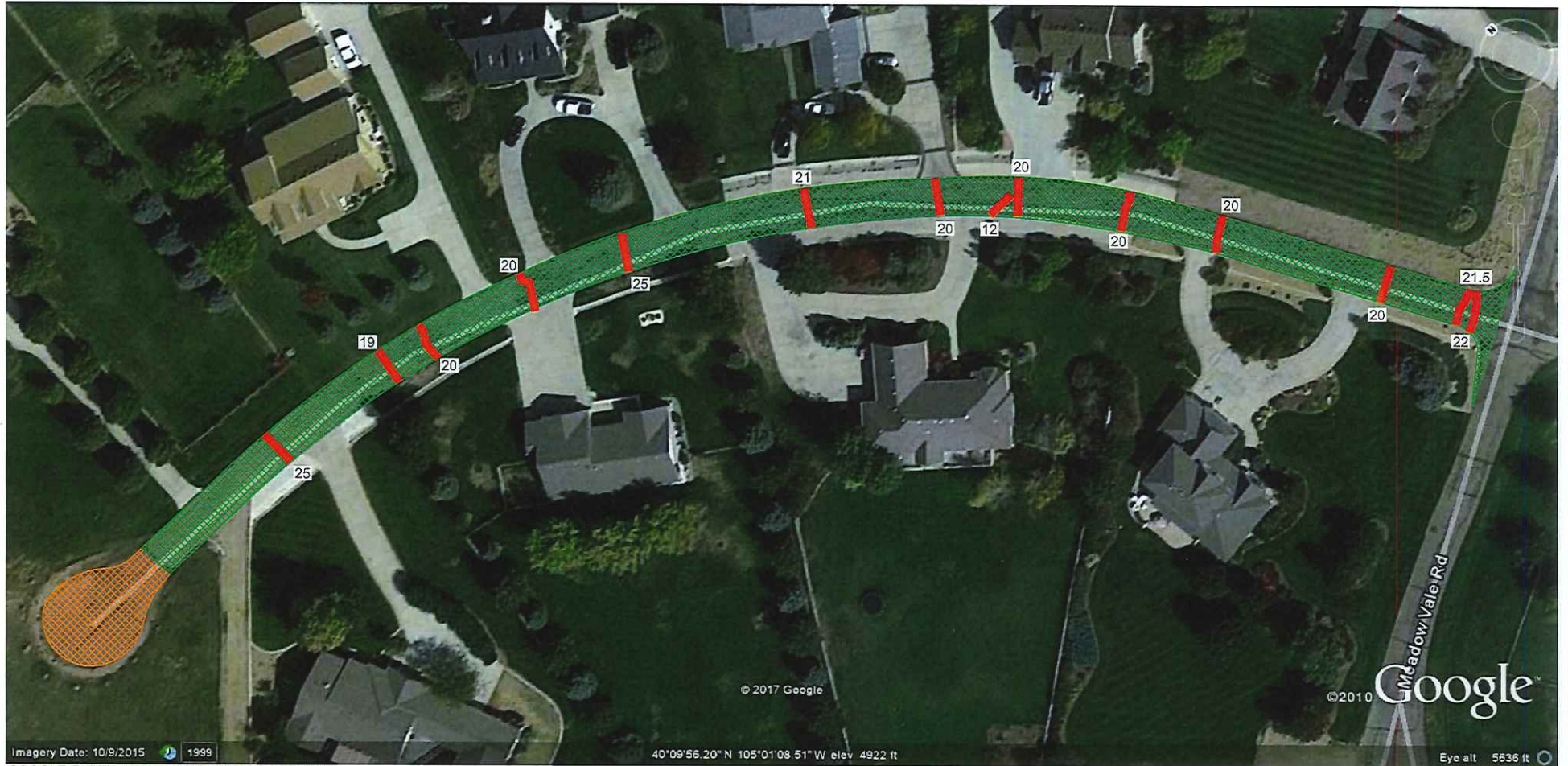
GOOGLE EARTH AERIAL IMAGE (DATE UNKNOWN)

-  Mill 5" full Depth and replace with 3" G PG(58-28 or 64-22) and 2" SX PG(58-28 or 64-22).
-  Mill 1.25" (2" at edge transitioning to 0.5" at center) and overlay with 2" SX PG(58-22 or 64-22).
-  Small patch areas - remove and replace with SX-PG(58-28 or 64-22).
-  Crack Patch (Linear Feet) - 5" depth remove and replace with 3" - 4" of SX PG(58-28 or 64-22).



GROUND ENGINEERING CONSULTANTS	
MEADOW VALE ROAD - NORTH LOOP SCOPE OF WORK	
JOB NO.: 17-3738	FIGURE: 2
CADFILE NAME: 17-3738SITE.DWG	

Patching - Complete
 Overlay - 7-30-2018



Imagery Date: 10/9/2015 1999
 GOOGLE EARTH AERIAL IMAGE (DATE UNKNOWN)

40°09'56.20" N 105°01'08.51" W elev 4922 ft

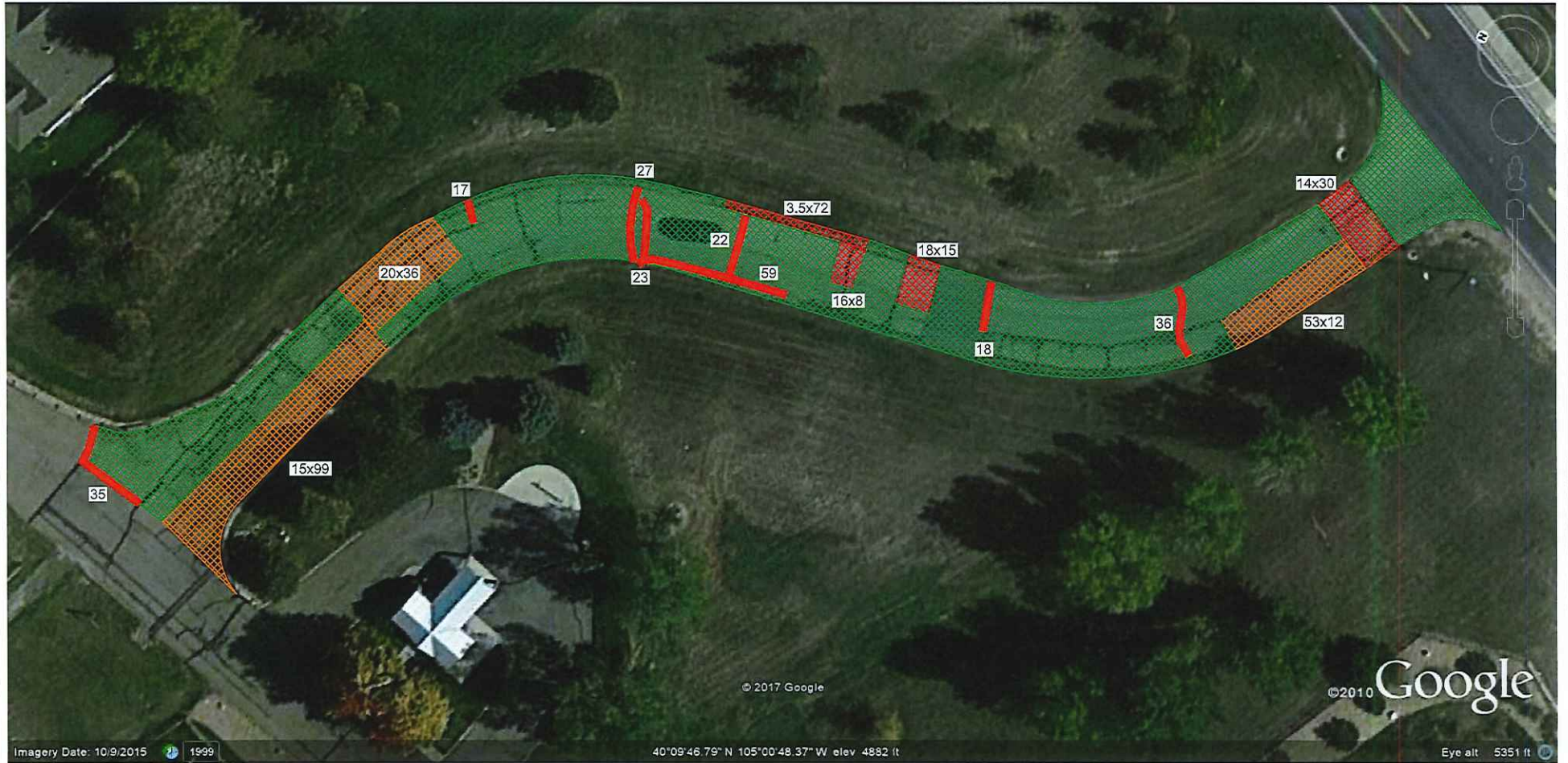
Eye alt 5636 ft

- Mill 5" full Depth and replace with 3" G PG(58-28 or 64-22) and 2" SX PG(58-28 or 64-22).
- Mill 1.25" (2" at edge transitioning to 0.5" at center) and overlay with 2" SX PG(58-22 or 64-22).
- Small patch areas - remove and replace with SX-PG(58-28 or 64-22).
- Crack Patch (Linear Feet) - 5" depth remove and replace with 3" - 4" of SX PG(58-28 or 64-22).






GROUND	
ENGINEERING CONSULTANTS	
BLUE MTN. ROAD - WEST END	
SCOPE OF WORK	
JOB NO.: 17-3738	FIGURE: 3
CADFILE NAME: 17-3738SITE.DWG	

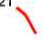
Patching - 7-27-2018
 Overlay - 8-1-2018



GOOGLE EARTH AERIAL IMAGE (DATE UNKNOWN)

-  Mill 5" full Depth and replace with 3" G PG(58-28 or 64-22) and 2" SX PG(58-28 or 64-22).

 Mill 1.25" (2" at edge transitioning to 0.5" at center) and overlay with 2" SX PG(58-22 or 64-22).
-  Small patch areas - remove and replace with SX-PG(58-28 or 64-22).

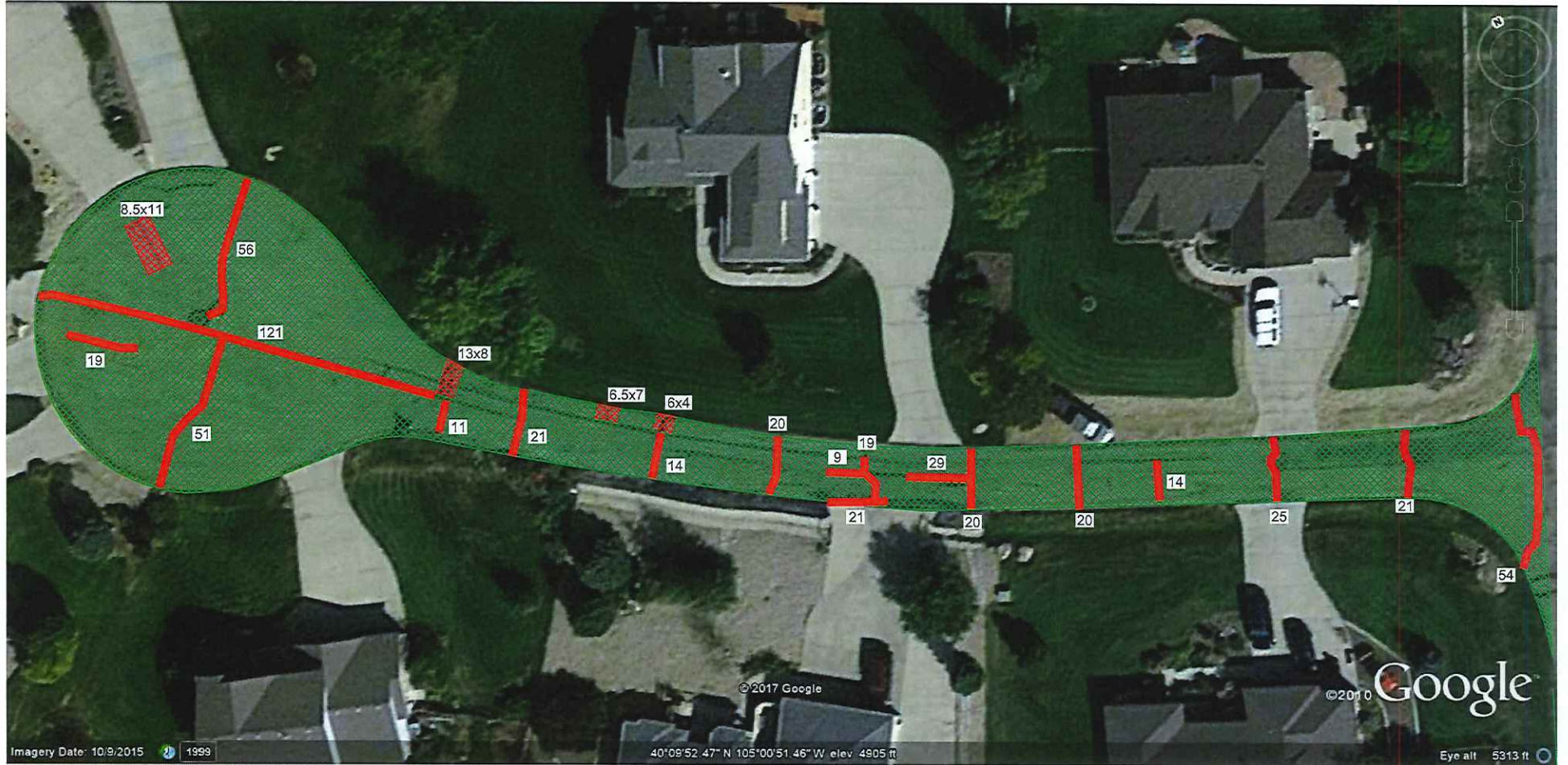
 Crack Patch (Linear Feet) - 5" depth remove and replace with 3" - 4" of SX PG(58-28 or 64-22).




(Not to Scale)


GROUND	
ENGINEERING CONSULTANTS	
SOUTH ENTRANCE ROAD	
SCOPE OF WORK	
JOB NO.: 17-3738	FIGURE: 4
CADFILE NAME: 17-3738SITE.DWG	


Patching - Completed
 Overlay - 7-26-2018



Imagery Date: 10/9/2015 1999
 GOOGLE EARTH AERIAL IMAGE (DATE UNKNOWN)

 Mill 1.25" (2" at edge transitioning to 0.5" at center) and overlay with 2" SX PG(58-22 or 64-22).

 Small patch areas - remove and replace with SX-PG(58-28 or 64-22).

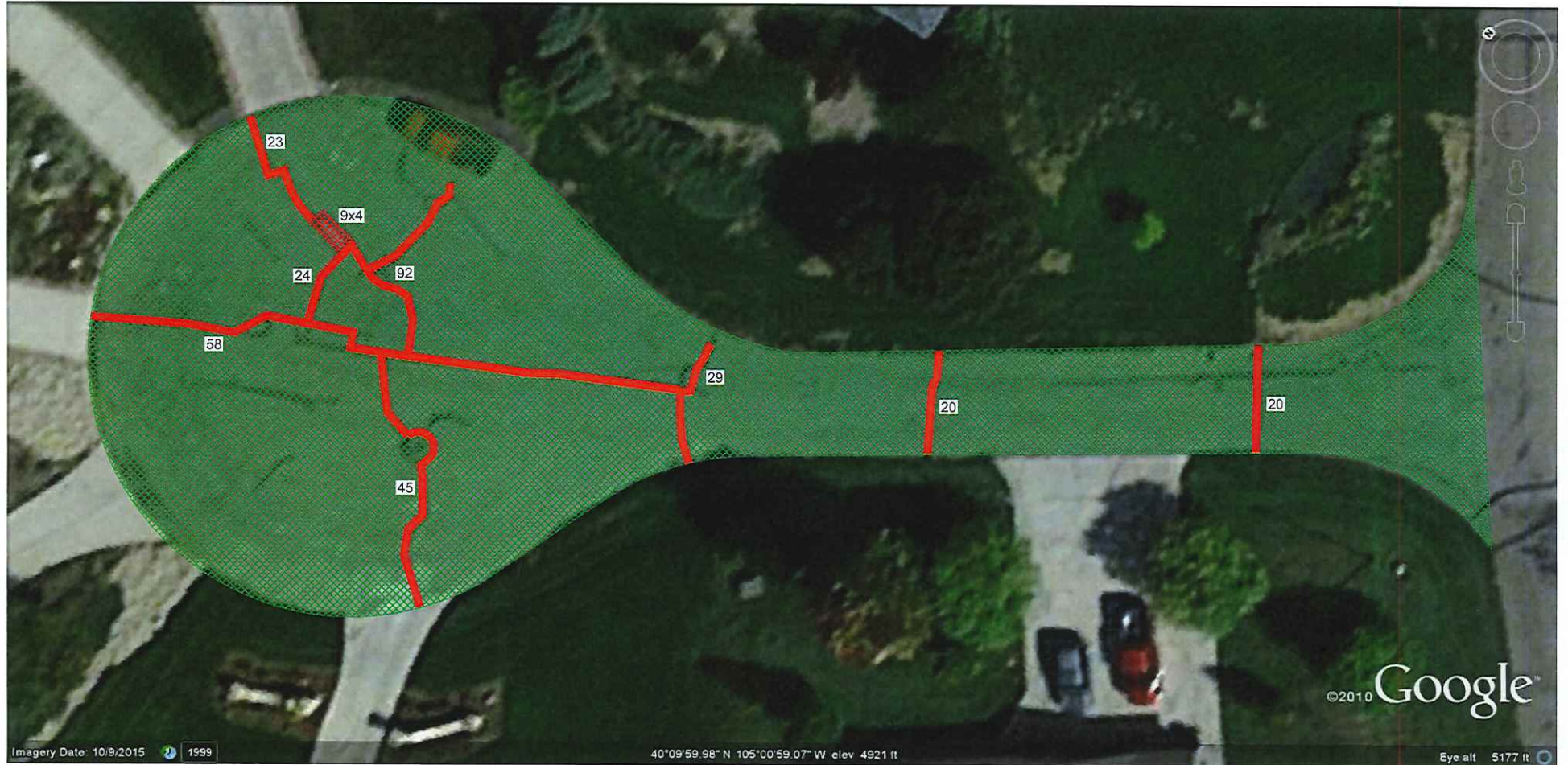
 Crack Patch (Linear Feet) - 5" depth remove and replace with 3" - 4" of SX PG(58-28 or 64-22).




(Not to Scale)


GROUND ENGINEERING CONSULTANTS	
MEADOWLARK PLACE SCOPE OF WORK	
JOB NO.: 17-3738	FIGURE: 5
CADFILE NAME: 17-3738SITE.DWG	


Patching - Completed
 Overlay - 7-26-2018



GOOGLE EARTH AERIAL IMAGE (DATE UNKNOWN)

 Mill 1.25" (2" at edge transitioning to 0.5" at center) and overlay with 2" SX PG(58-22 or 64-22).

 Small patch areas - remove and replace with SX-PG(58-28 or 64-22).

 Crack Patch (Linear Feet) - 5" depth remove and replace with 3" - 4" of SX PG(58-28 or 64-22).



(Not to Scale)

GROUND ENGINEERING CONSULTANTS	
JCK PLACE SCOPE OF WORK	
JOB NO.: 17-3738	FIGURE: 6
CADFILE NAME: 17-3738SITE.DWG	

Removal and Replacement -
7-16-2018
Overlay 8-1-2018



Imagery Date: 10/9/2015 1999
GOOGLE EARTH AERIAL IMAGE (DATE UNKNOWN)

40°09'57.23" N 105°00'36.80" W elev 4896 ft

Eye alt 5244 ft

Mill 5" full Depth and replace with 3" G PG(58-28 or 64-22)
and 2" SX PG(58-28 or 64-22).



(Not to Scale)

GROUND ENGINEERING CONSULTANTS	
HOMESTEAD PLACE SCOPE OF WORK	
JOB NO.: 17-3738	FIGURE: 7
CADFILE NAME: 17-3738SITE.DWG	

Meadow Vale HOA



Imagery Date 10/9/2015 1999
GOOGLE EARTH AERIAL IMAGE (DATE UNKNOWN)

Asphalt Speed Bump

5.0"
Indicates asphalt core depth and approximate location.



GROUND ENGINEERING CONSULTANTS	
PAVEMENT THICKNESS	
JOB NO.: 17-3738	FIGURE: 9
CADFILE NAME: 17-3738SITE.DWG	