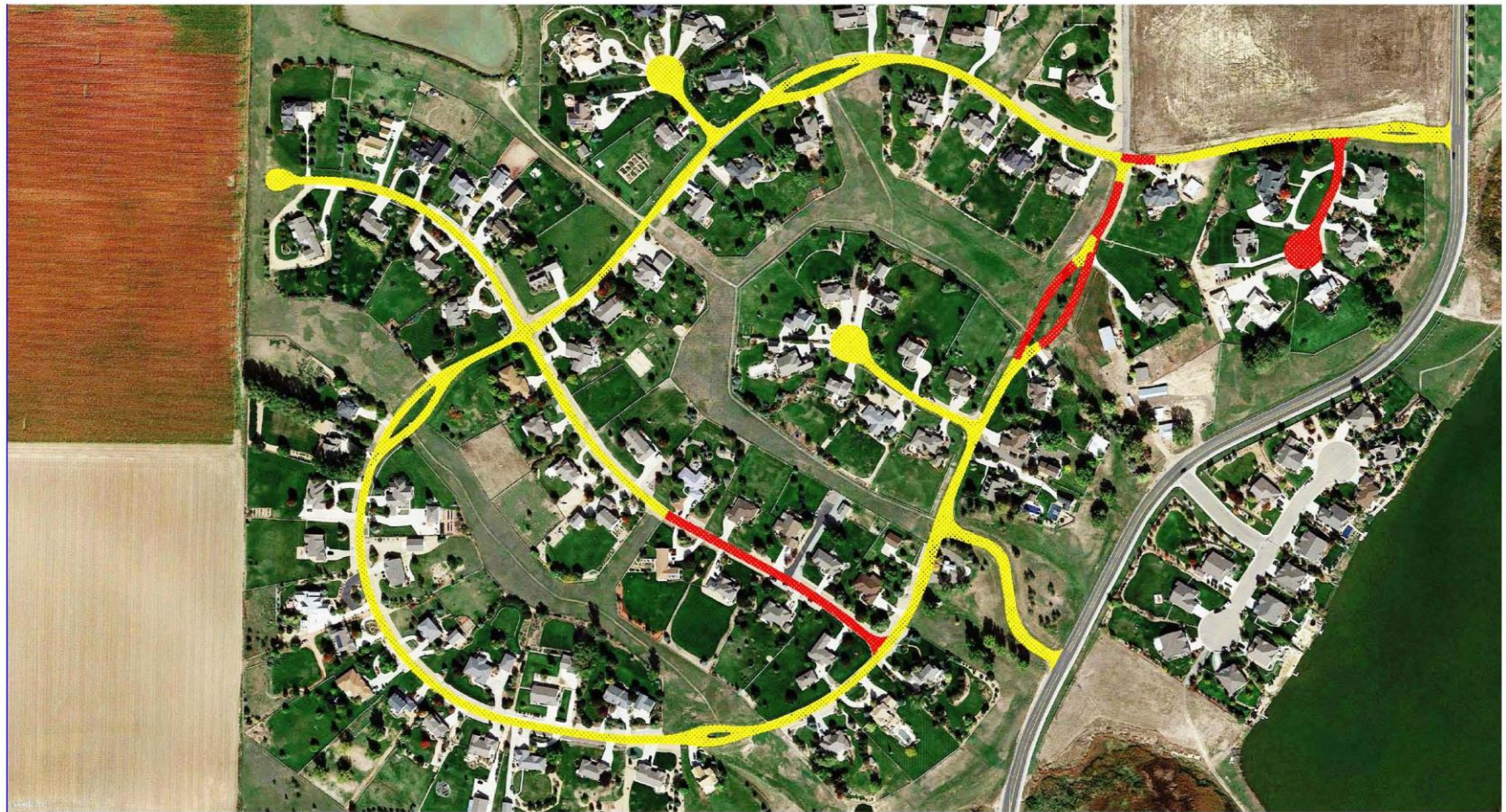


Meadow Vale Farm Roadways (Initial Evaluation)



GOOGLE EARTH AERIAL IMAGE (DATE UNKNOWN)

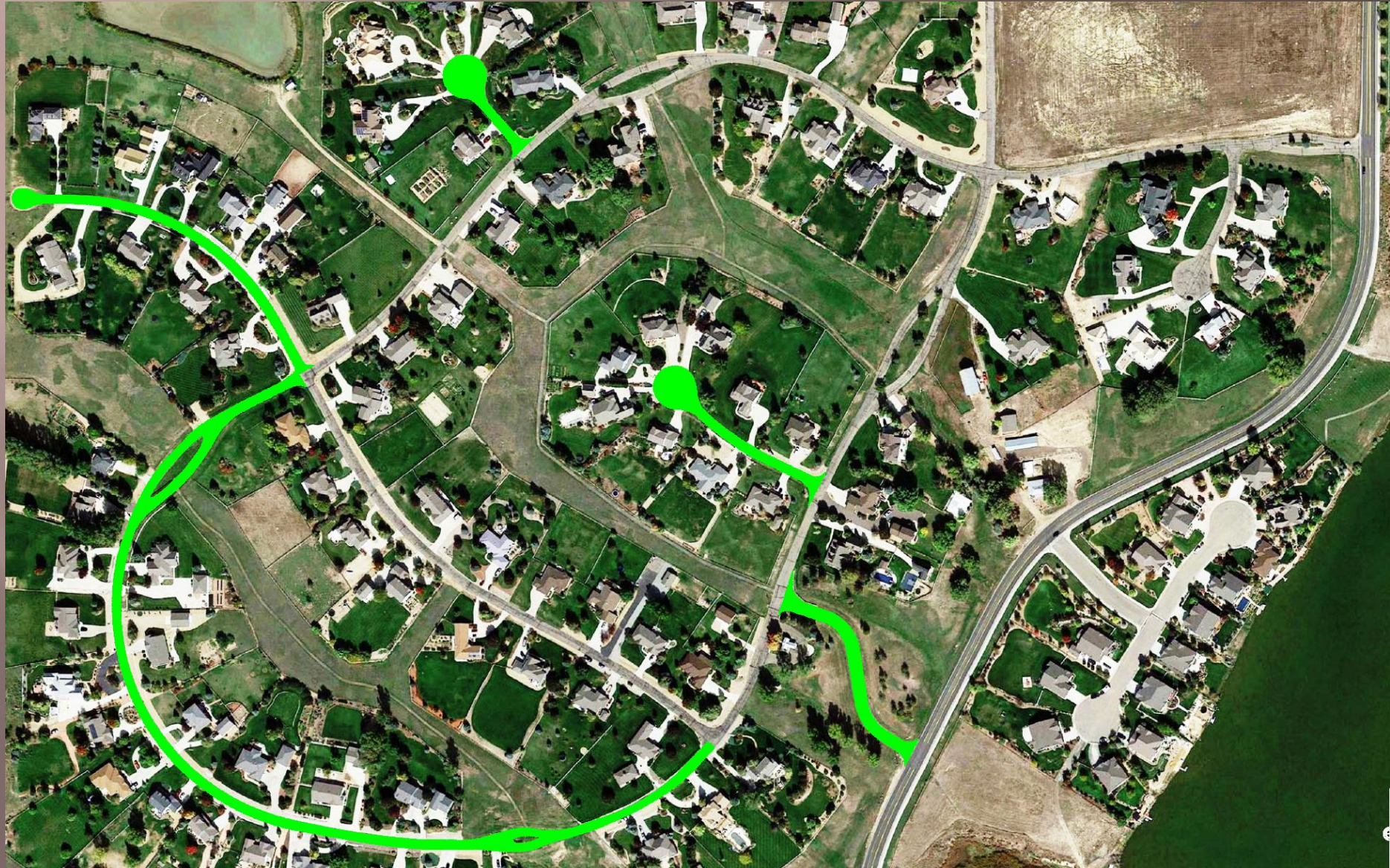
- A** Crack Seal/Remove and Replace Small Highly Distressed Areas
(See Table in Text for Future Maintenance Recommendations)
- B** Remove 4 1/2 to 5" of Asphalt and Replace with 5" of Asphalt. Additional subgrade remediation via removal and replacement with base course may be required in soft or settled areas.



GROUND ENGINEERING CONSULTANTS	
MAINTENANCE OPTIONS / DISTRESS EXAMPLES	
JOB NO.: 17-3523	FIGURE: 2
CADFILE NAME: 17-3523SITE.DWG	

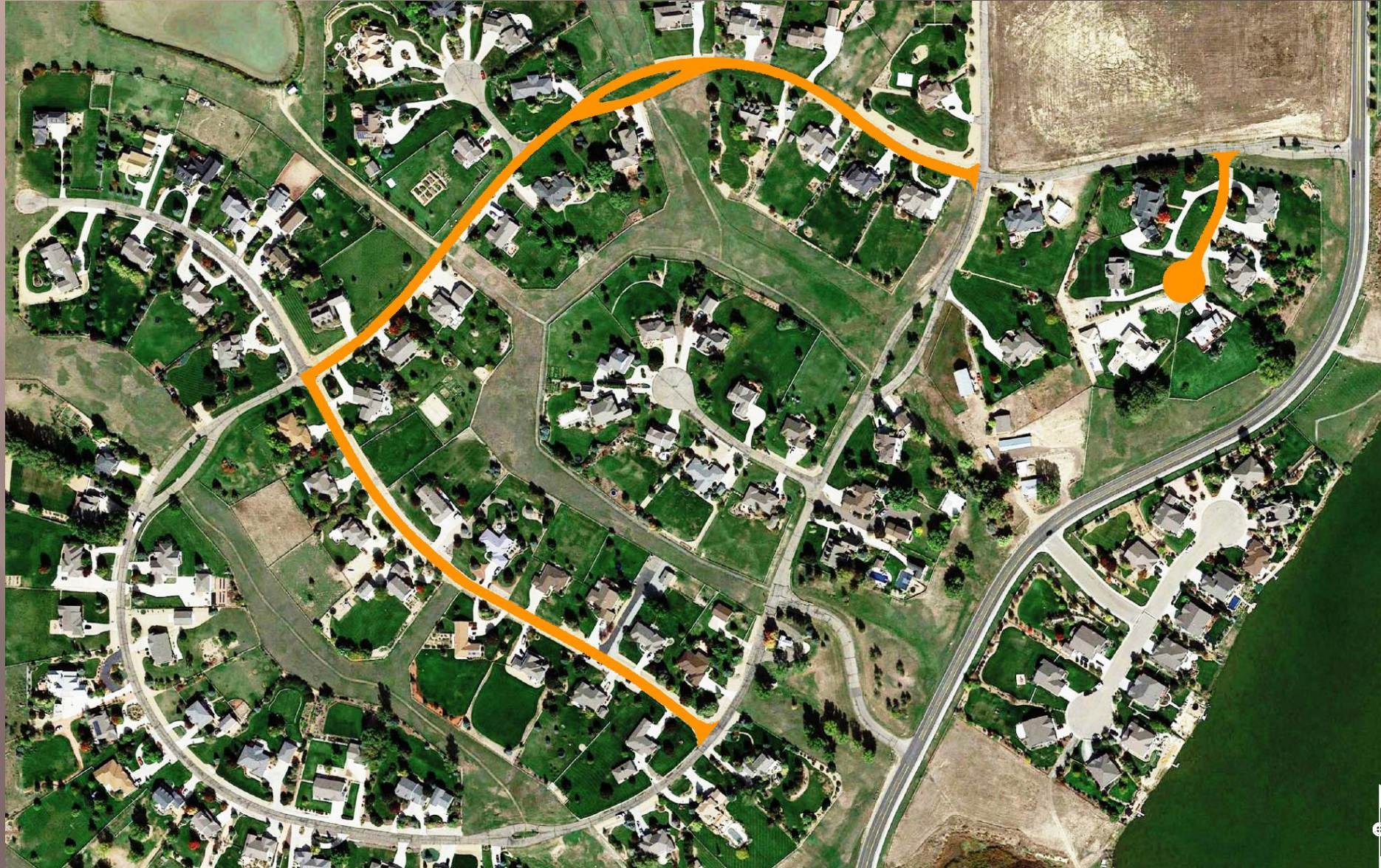
Meadow Vale Farm Roadways

2017 Proposed - \$165,000 Est.



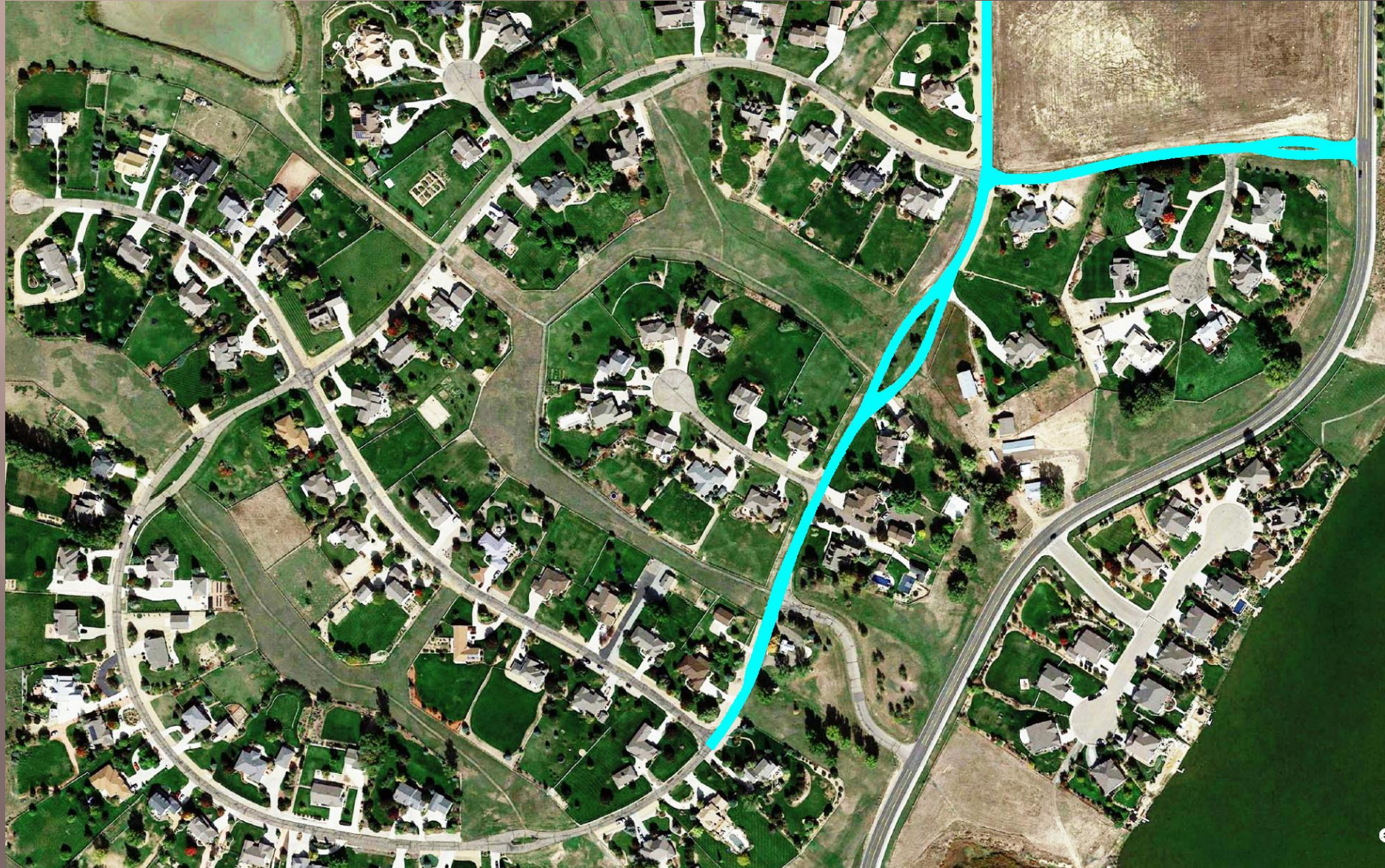
Meadow Vale Farm Roadways

2018 Proposed - \$170,000 Est.



Meadow Vale Farm Roadways

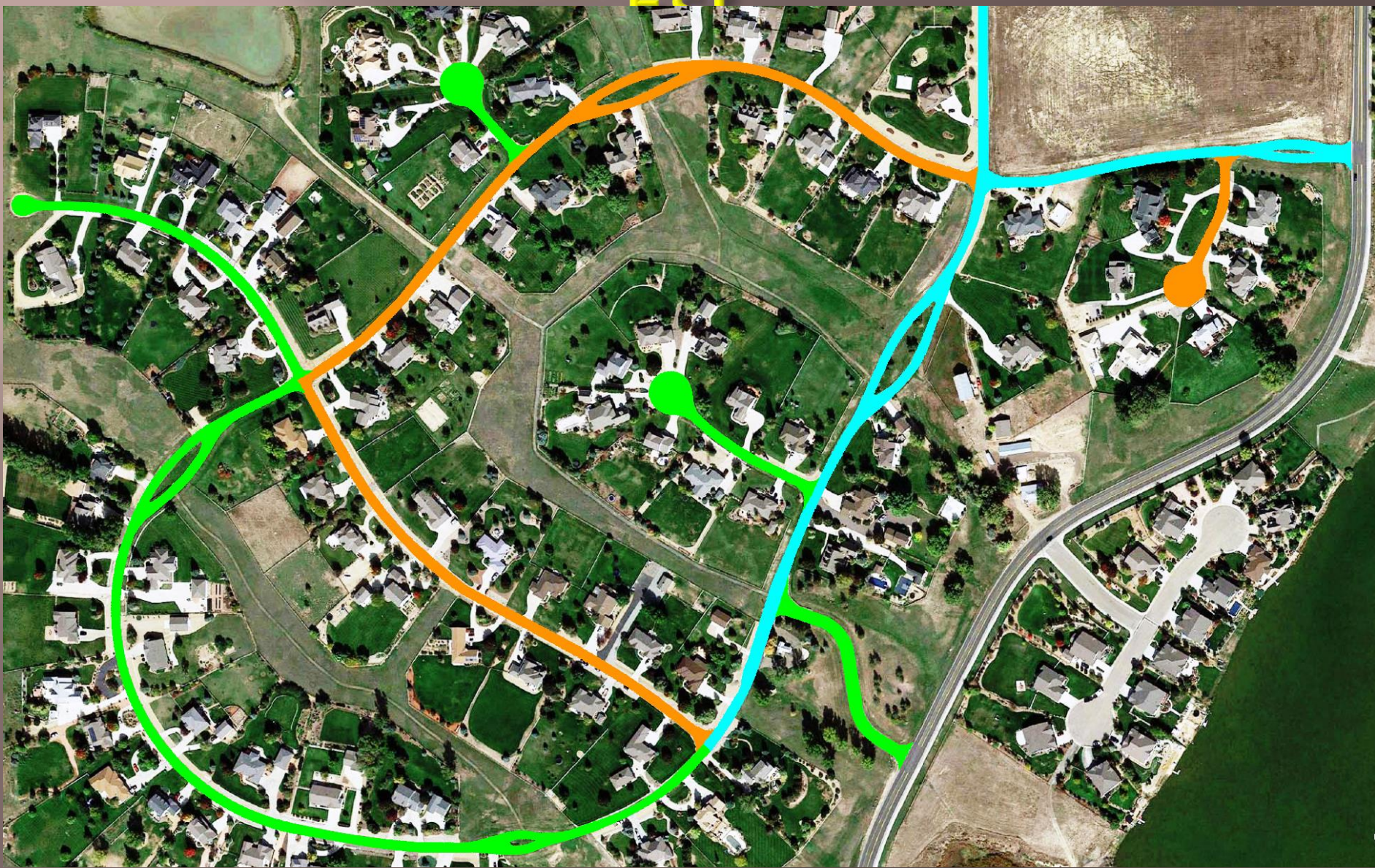
2019 Proposed - \$140,000 Est.



Meadow Vale Farm Roadways

2017-2019 Proposed - \$475,000

Est



Pavement Evaluations/Maintenance Plans/Const. Management

Notes/Special

1. Work w and 4PI
2. Ideally, Existing was em
3. Night w
4. It is imp
5. Pending
6. Cold joi
7. Rocks fr
8. A rubbe
9. Asphalt
10. Items ir removal
11. No mat HRUP y
12. Full con base pa
13. Tack cc require
14. Hot Mix asphalt

**2016 HRUP M&R PROJECT
HIGHLANDS RANCH, COLORADO
BID SCHEDULE**

ITEM NO.	DESCRIPTION	Quant.	UNIT	UNIT PRICE	COST
202	REMOVAL OF ASPHALT PLANING (2.0" Thickness) (GREEN Area in Figure 1)	1,182	SY		
202	REMOVAL OF ASPHALT PLANING (3.0" Thickness) (YELLOW in Figure 1)	1,050	SY		
202	REMOVAL OF ASPHALT PLANING (5.0" Thickness) (ORANGE in Figure 1)	406	SY		
202	REMOVE AND REPLACE CONCRETE SIDEWALK (PINK in Figure 1)(Also includes chase drain for sidewalk in rear)	23	SY		
202	REMOVE AND REPLACE CONCRETE CURB AND GUTTER (PINK in Figure 1)(Dowel into Existing)	151	LF		
202	REMOVE AND REPLACE CONCRETE PAVEMENT (7") (HIGH EARLY) (PINK IN FIGURE 1)(Dowel into Existing) (Place load transfer reinforcing at mid joint if panel is large enough)	112	SY		
202	ADJUST VALVE BOX	2	EA		
304	AGGREGATE BASE COURSE (CL 6) (CIP) (If soft areas are encountered in R&R areas)(includes subgrade removal) (includes removal of pea gravel in some concrete pavement areas)	35	TON		
403	HMA (GRADING SX) (75) (64-22)(58-28) (HAUL & ASPHALT) (Tonnage includes 7% fluff)	444	TON		
403	HMA (GRADING SX) (75) (64-22/58-28)(Crack Patching)(Patching)(6" Thick) (Includes Removal)(Crack Patching Portion = 247' x 2') (Patch = 25 SY)(See RED lines/patch in Figure 1)	26	TON		
627	PAVEMENT MARKING PAINT (Entire Development with the exception of the Gas Station and Bank) (Includes blacking-out all Starbucks arrows)	1	LS		
700	F/A	1	LS	\$5,000	\$5,000

TOTAL BID

lays

ent. thod

ment

re in

vent

/ will

med

GROUND ENGINEERING CONSULTANTS	
NOTE / SPECIAL PROVISIONS	
JOB NO.: 16-3588	FIGURE: 2
CADFILE NAME: 16-3588SITE.DWG	

Manor Ridge HOA, Ken Caryl (2016)



Questions?

